



Multihull Oktoberfest Slalom Run and BAMA Cup Closer

Oktober 16, 2011

SAILING INSTRUCTIONS

1 RULES

This regatta shall be governed by the rules as defined in The Racing Rules of Sailing 2009-2012, the prescriptions of USSailing, the Notice of Race and these Sailing Instructions. The regatta is designated as Advertising Category A.

2 SAFETY

Yachts shall not impede the passage of ship traffic while racing. Rule 9 of the Inland Rules of Road applies with respect to all shipping traffic on San Francisco Bay and its tributaries. A violation of Rule 9 is subject to protest by any competitor and/or by the race committee. Compliance with RRS 60-63 will not be required with respect to a protest involving a Rule 9 infraction. A violation of Rule 9 may not be exonerated by an alternate penalty.

3 NOTICES TO COMPETITORS

Notices to competitors will be emailed to participants. Notices shall be posted no later than 2100 hours, Friday, October 14th. If notices have been posted, the committee boat shall fly flag "L" in the racing area.

4 SIGNALS MADE ASHORE

No signals shall be made ashore.

5 SCHEDULE and CLASS FLAG

Warning (Alpha Flag) 1210 hours

Start 1215 hours

Two races are scheduled. The Warning Signal for the second races shall be made as soon as practical.

6 STARTING and FINISHING LINES

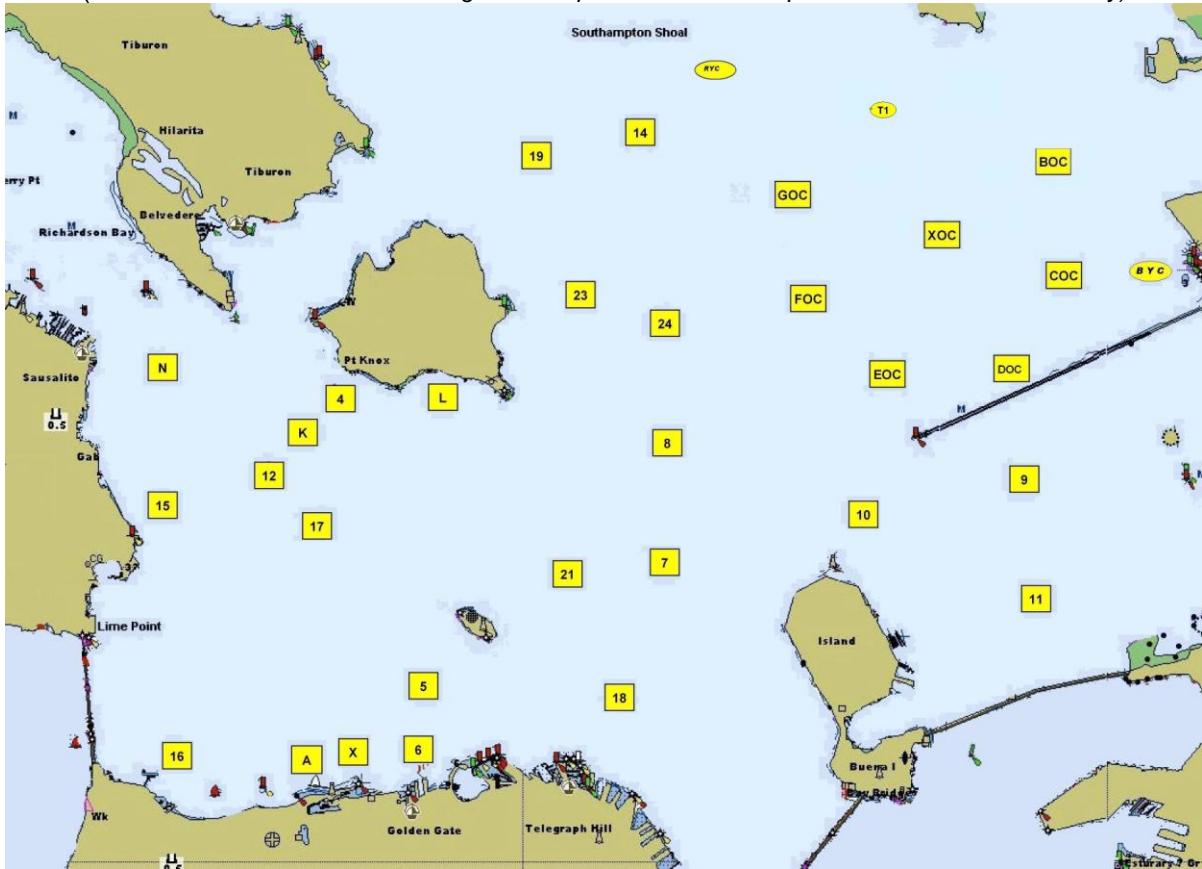
The start line will be between an orange flag on the Signal Boat and the Buoy "XOC". There are two choices for the finish line. (See 7) Finish line "Finish(XOC)" will be the same as the start line. Finish line "Finish(BYC)" will be between a blue shape on the Signal Boat and the Buoy "BYC".

7 COURSES (See chartlet)

- | | |
|--|----------|
| 1) Start, FOCp, DOCp, T1s, BOCs, Finish(XOC) | 6.7 nm |
| 2) Start, FOCp, EOCp, T2s, BOCs, FOCp, Finish(XOC) | 8.0 nm |
| 3) Start, 8p, EOCp, T2s, DOCp, BOCp, FOCp, Finish(XOC) | 11.55 nm |
| 4) Start, FOCp, DOCp, T1s, Finish(BYC) | 6.9 nm |
| 5) Start, FOCp, EOCp, T2s, BOCs, FOCp, Finish(BYC) | 9.6 nm |

Numeral pennants will be used to indicate the course to be sailed.

(A Chartlet – not to be used for navigation. Reproduced here with permission from YRA of SFBay)



8 MARKS

BOC, EOC, FOC, and XOC are yellow cans on the Olympic Circle.

T1: Club inflatable located approximately at 37-53.18 by 122-22.25

T2: Club inflatable replacing GOC

DOC: FI G 4s 15ft "3" 1.6nm W of Berkeley Yacht Club on the Olympic Circle.

8: R"4" FI 4s Horn 1 nm East of Point Blunt

Finish(BYC) is the BYC buoy – a yellow can .4 nm W of Berkeley Yacht Club (37-52.07 by 122-19.56)

9. TIME LIMIT

Yachts finishing after 1700 hours will be scored DNF

10 PROTESTS

Protests shall be turned in no later than one hour after the committee boat docks at Berkeley YC. Protests will be heard one hour later.

11 SCORING

The Low Point System of Appendix A of the racing rules will apply. A minimum of one race shall be completed to constitute a series.

12 COMMUNICATIONS

RRS 25 is amended to allow for on-the-water radio communications between the R/C and racing boats on VHF channel 78. The R/C will communicate OCS and the signaled course for the race. The inability of a competitor to hear a hail for over early or any other information shall not relieve her of her responsibility, nor shall it be grounds for redress.

Contact information: Bobbi Tosse, Bobbi@jfcbat.com